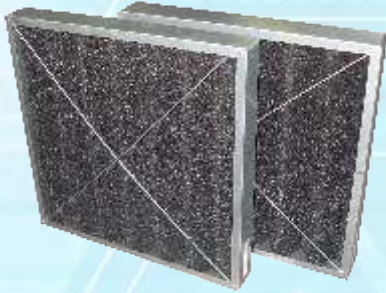


Coalescer CF-B-L1

Application Areas



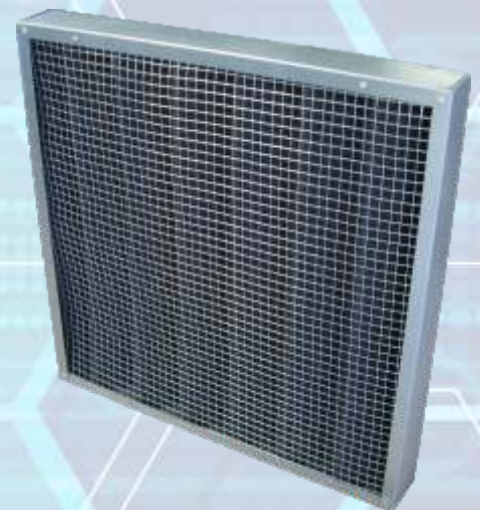
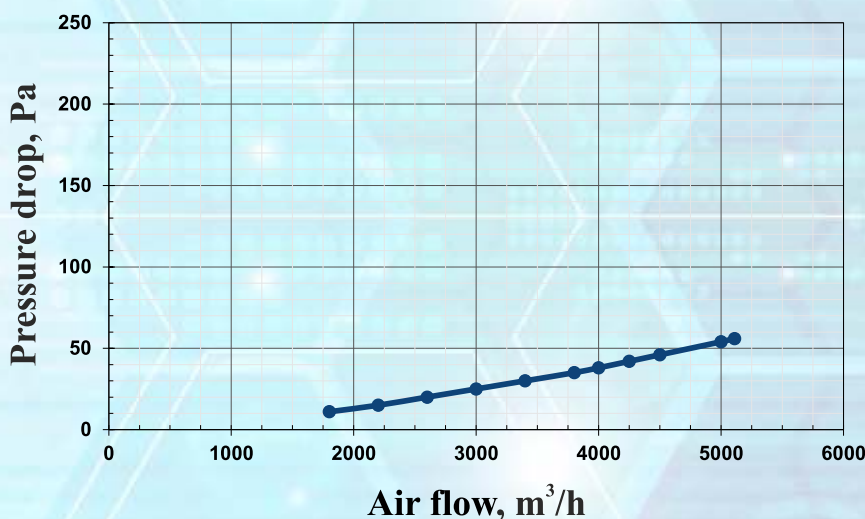
Coalescer CF-B-L1 are used in air intake. Systems for gas turbine. There they remove droplets and big dust particles from the air inlet flow.

TECHNICAL DATA CF-B-L1

| Coalescer | Type | CF-B-L1 |
|------------------------|-------------------|----------------------|
| Air flow capacity | m ³ /r | 3400-4250 |
| Initial resistance | Pa | |
| 3400 m ³ /h | | 35 |
| 4250 m ³ /h | | 70 |
| Final resistance | Pa | 250 |
| Filter class EN 779 | | G2 |
| Nominal sizes | mm | 592(4)x592(4)x75(96) |

Construction

Coalescer CF-B-L1 consists of plastic or galvanized still frame. Inside the frame there is of polyurethane open-cell foam filter media.



Back side of the coalescer